

# High quality Recyclates

## for blow molding



Possible applications for our recyclates in the blow molding industry

## ... or are you still using prime virgin?

RSH recyclates are used to produce a wide variety of product packaging or components such as bottles, hollow bodies, canisters, tubes and air ducts.

**All our recyclates are:**

- + Laboratory tested
- + With certificate of analysis per batch
- + Available with technical data sheets & delivery specifications
- + Reproducible
- + Packed in big bags, octabins or silos

We have been carrying out high-quality toll processing in closed loops for many well-known customers for decades.



Product range of LDPE, HDPE & PP recyclates

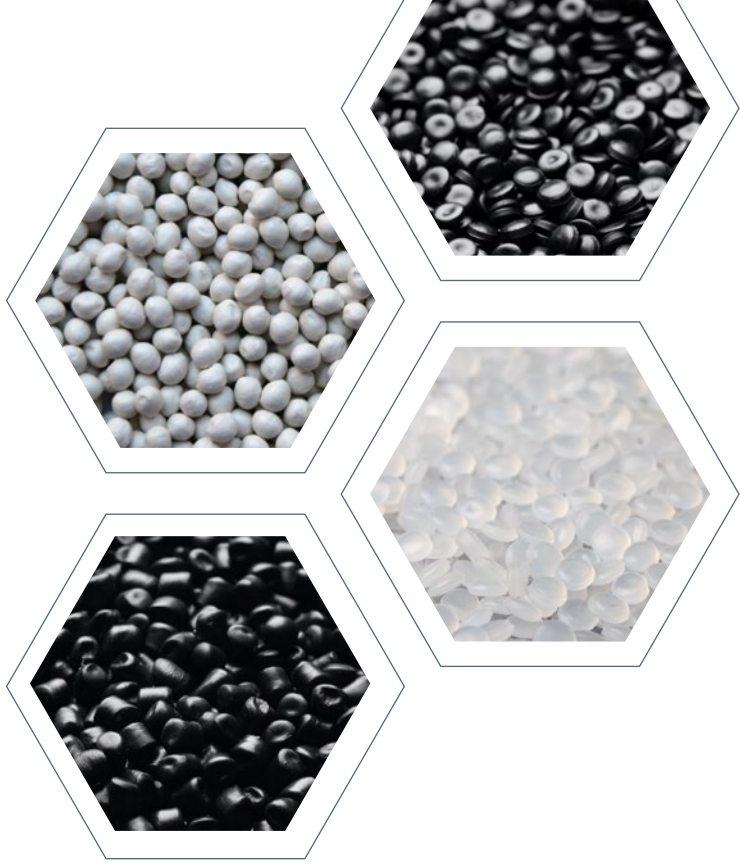
## Our recyclates for blow molding

	Grade name	% PIR/PCR	Other Colors	MFR (ISO 1133) g/10min	Density (ISO 1183) g/cm <sup>3</sup>	Impact Strength Notched (ISO 79/1eA) 23°C kJ/m <sup>2</sup>	Tensile Modulus (ISO 527) 1mm/min 23°C Mpa	Ash Content (ISO 3451) 625°C to constant mass %
HDPE	RSH HDPE 5009 B black	98/0		0,5 – 0,9 (190 °C / 5 kg)	955	n.a.	n.a.	n.a.
HDPE	RSH HDPE 5009.2 B black	98/0		0,5 – 0,9 (190 °C / 5 kg)	955	n.a.	n.a.	n.a.
HDPE	RSH HDPE 5009.2 B EXP 542 PCR black	ca 77/ ≥ 20		0,5 – 0,9 (190 °C / 5 kg)	955	n.a.	n.a.	n.a.
HDPE	RSH HDPE 5014 B black	98/0	grey-mixed color	1,0 – 1,4 (190 °C / 5 kg)	955	n.a.	n.a.	n.a.
HDPE	RSH HDPE 5016 B PCR black	ca 28/ ≥ 70	grey-mixed color	1,2 – 1,6 (190 °C / 5 kg)	955	n.a.	n.a.	n.a.
LDPE	RSH LDPE 2005 PCR transparent	0/100		0,2 - 0,5 (190 °C / 2,16 kg)	930	n.a.	n.a.	n.a.
PPC	RSH PPC 1010 B black	98/0		0,5 – 1,0 (230 °C / 2,16 kg)	940	> 10	> 1.100	< 5
PPC	RSH PPC 1015 B black	98/0		1,0 – 1,5 (230 °C / 2,16 kg)	940	> 10	> 1.100	< 5
PPC	RSH PPC 1025 B black	98/0		1,5 – 2,5 (230 °C / 2,16 kg)	940	> 10	> 1.100	< 5
PPC	RSH PPC 1035 B black	98/0		2,5 – 3,5 (230 °C / 2,16 kg)	940	> 10	> 1.100	< 5
PPR	RSH PPR 1030 B transparent	100/0		2,0 – 3,0 (230 °C / 2,16 kg)	900	n.a.	n.a.	n.a.

Ask about other standard or tailor-made recyclates for your industry or processing method

**Automotive**  
**Construction**  
**Packaging**  
**Consumer goods**



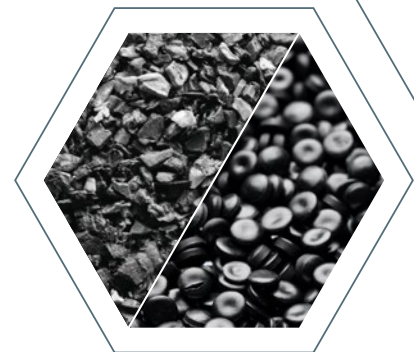


Recyclates from selected material streams

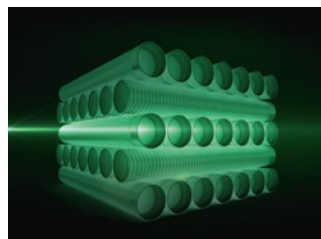
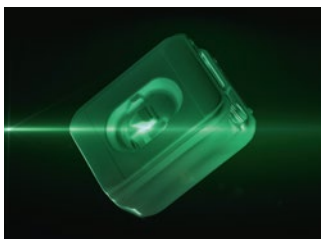
## You have the choice

From post-industrial and post-consumer waste

- + Use of very clean and pure raw materials
- + Constant processability
- + Narrow tolerances
- + Plain surfaces
- + Good weldability
- + Barely perceptible odor

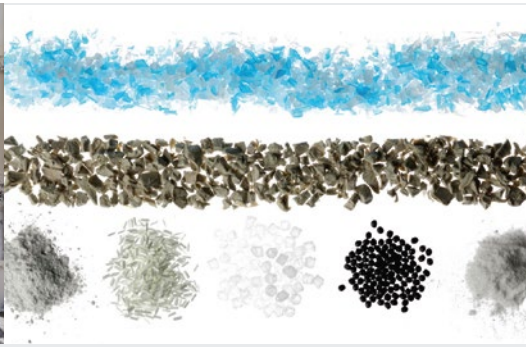


Blow  
molding  
Extrusion  
Injection  
Film



We stand for a true circular economy

# Recyclates – „Made in Germany“



## Production

- Batch homogenization up to 25 tons
- Storage in insulated warehouses
- Production on single- and double screw extruders
- Experienced employees with a lot of know-how
- Incorporation of additives, stabilizers and fillers

## Development

- Tailor-made according to customer requirements
- In-house technical center with laboratory extruders
- Planning, testing and implementation of projects

## Testing options laboratories

- Physical properties
- Mechanical properties
- Thermal properties
- Raw material analysis

## You are on the safe side with us



### Co<sub>2</sub> Balancing

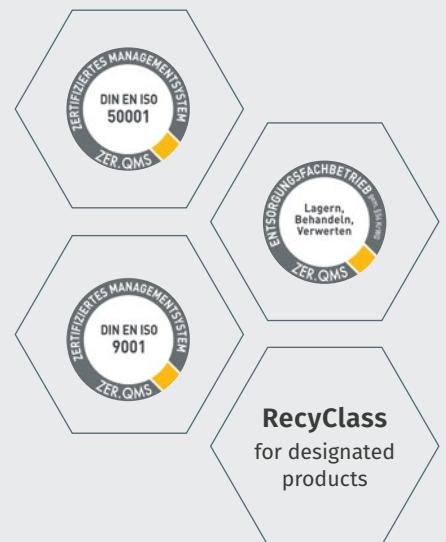
CO<sub>2</sub> Certificates per grade on request

Determination of the GWP (Global Warming Potential) for 1 kg of the recyclate



We have been a driving force in the circular economy since 1958

At RSH we focus on energyefficient production and the protection of the environment



[www.rshpolymere.de](http://www.rshpolymere.de)