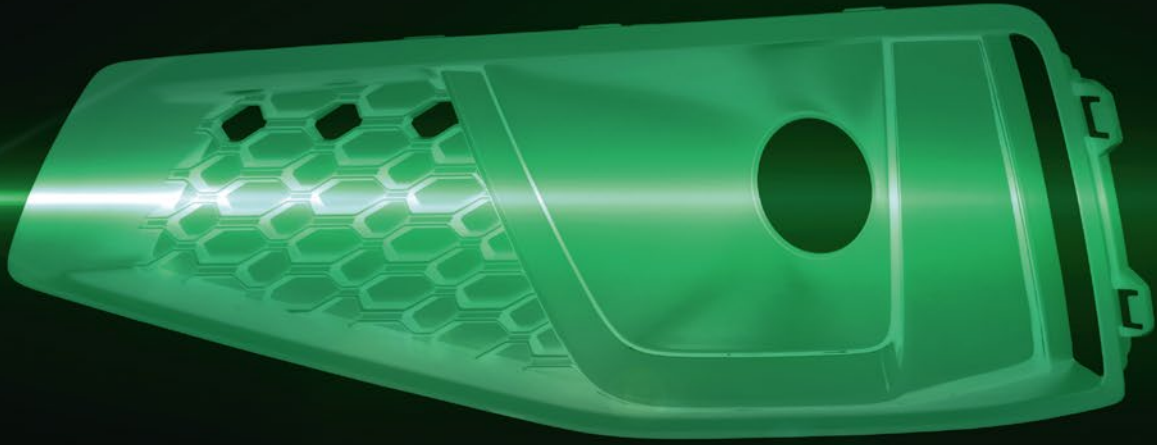


High quality Recyclates

for injection molding



Possible applications for our recyclates in the injection molding industry

... or are you still using prime virgin?

RSH recyclates are used to produce a wide variety of components from the automotive, construction, consumer goods and packaging industries, such as caps, pens, housings, covers, spacers and other items.

All our recyclates are:

- + Laboratory tested
- + With certificate of analysis per batch
- + Available with technical data sheets & delivery specifications
- + Reproducible
- + Packed in big bags, octabins or silos

We have been carrying out high-quality toll processing in closed loops for many well-known customers for decades.



Product range of LDPE, HDPE, PP, ABS & PC/ABS recyclates

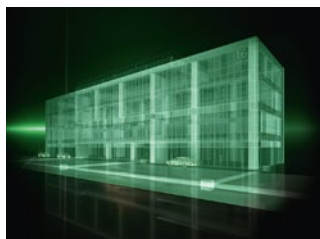
Our recyclates for injection molding

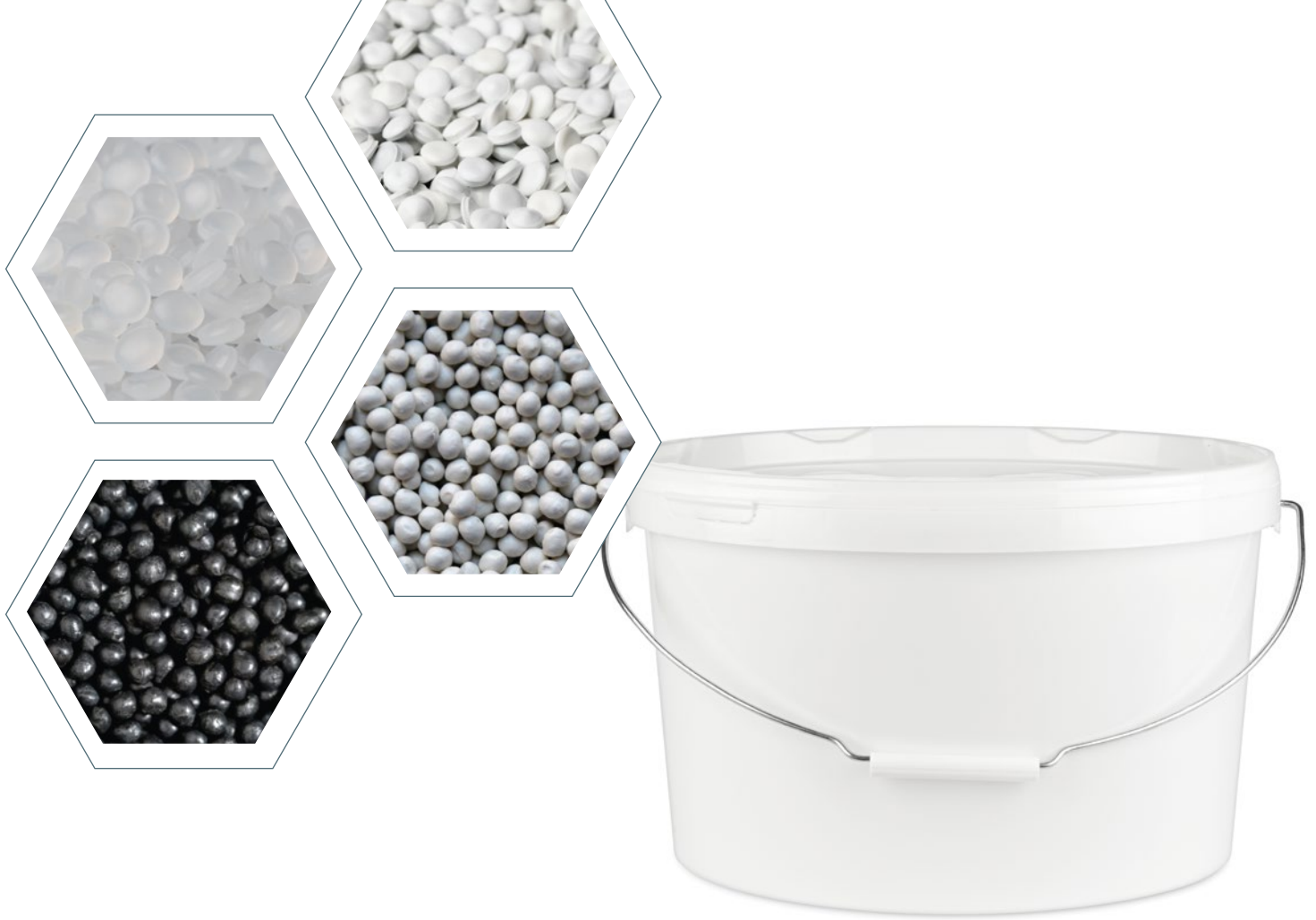
	rC / R*	Grade name	% PIR/ PCR	Other Colors	MFR (ISO 1133) g/10min	Density (ISO 1183) g/cm ³	Impact Strength Notched (ISO 79/1eA) 23°C kJ/m ²	Tensile Modulus (ISO 527) 1mm/min 23°C Mpa	Ash Content (ISO 3451) 625°C to constant mass %
ABS	rC	RSH ABS 1310 black	≥ 97/0	mixed color	13 (220 °C / 10 kg)	1.050	> 10	2.400	n.a.
ABS	rC	RSH ABS 2016 black	≥ 97/0	mixed color, jet black	20 (220 °C / 10 kg)	1.050	> 16	2.400	n.a.
PC/ABS	rC	RSH PC/ABS 2525 A35 black	98/0		25 (260 °C / 5 kg)	1.130	25	n.a.	n.a.
PC/ABS	rC	RSH PC/ABS 2530 A15 black	98/0		25 (260 °C / 5 kg)	1.150	30	n.a.	n.a.
PP	rC	RSH PP flex 0604 transparent	100/0		4,0 – 6,0 (230 °C / 2,16 kg)	900	60	350	n.a.
PP	rC	RSH PP 1014 MF 10 black	85/0		10 (230 °C / 2,16 kg)	980	n.a.	1.400	10
PP	rC	RSH PP 1024 MF 20 HT black	75/0		10 (230 °C / 2,16 kg)	1.070	5	2.400	20
PP	rC	RSH PP 2026 MF 20 UV black	75/0		20 (230 °C / 2,16 kg)	1.070	4	2.300	20
PP	rC	RSH PP 2026 MF 20 UV EXP 520 CL black	45/30		20 (230 °C / 2,16 kg)	1.070	4	2.300	20
PP	rC	RSH PP 0726 MF 30 black	65/0		7 (230 °C / 2,16 kg)	1.135	4	2.600	30
PP	rC	RSH PP 1032 MF 40 black	55/0		10 (230 °C / 2,16 kg)	1.250	3	3.200	40
PPC	rC	RSH PPC 0514 black	95/0		5 (230 °C / 2,16 kg)	930	6	1.300	n.a.
PPC	rC	RSH PPC 0514 HT EXP 325 black	55/30		5 (230 °C / 2,16 kg)	930	6	1.300	n.a.
PPC	rC	RSH PPC 3010 mixed color	95/0	black	30 (230 °C / 2,16 kg)	930	10	1.000	n.a.
PPC-HI	rC	RSH PPC-HI 1514 MF 10 black	85/0		15 (230 °C / 2,16 kg)	960	30	1.400	10
PPC-HI	rC	RSH PPC-HI 1018 MF 20 black	75/0		10 (230 °C / 2,16 kg)	1.060	15	1.800	20
PPC-HI	rC	RSH PPC-HI 1016 MF 30 UV black	65/0		10 (230 °C / 2,16 kg)	1.130	28	1.600	30
PP GF	rC	RSH PP 1536 MF 25 GF 5 black	65/0		15 (230 °C / 2,16 kg)	1.150	3	3.600	30
PP GF	rC	RSH PP 1036 GF 20 black	75/0		10 (230 °C / 2,16 kg)	1.050	4	3.600	20
PP GF	rC	RSH PP 0556 GF 30 black	65/0		5 (230 °C / 2,16 kg)	1.120	9	5.800	30
PP GF	rC	RSH PP 0450 GF 30 HT EXP 511 black	15/40		5 (230 °C / 2,16 kg)	1.120	9	5.800	30
PP GF	rC	RSH PP 1556 GF 30 black	65/0		15 (230 °C / 2,16 kg)	1.120	8	5.800	30
PP/PE	rC	RSH PP/PE 1510 HT black	95/0		15 (230 °C / 2,16 kg)	935	9	1.000	n.a.
PP/PE	rC	RSH PP/PE 1510 HT EXP 261 black	40/50		15 (230 °C / 2,16 kg)	935	9	1.000	n.a.
HDPE	R	RSH HDPE 5080 i transparent	100/0	black	5,0 – 8,0 (190 °C / 2,16 kg)	950	n.a.	n.a.	n.a.
HDPE	R	RSH HDPE 5080 i transparent PCR	0/100	grey	5,0 – 8,0 (190 °C / 2,16 kg)	950	n.a.	n.a.	n.a.
HDPE	R	RSH HDPE 5080 i + black	98/0		5,0 – 8,0 (190 °C / 2,16 kg)	955	n.a.	n.a.	n.a.
LDPE	R	RSH LDPE 2022 i transparent	100/0		1,5 - 2,2 (190 °C / 2,16 kg)	920	n.a.	n.a.	n.a.
LDPE	R	RSH LDPE 2070 i transparent	100/0	black	5,0 - 8,0 (190 °C / 2,16 kg)	920	n.a.	n.a.	n.a.
LDPE	R	RSH LDPE 2070 i + transparent	100/0		5,0 - 8,0 (190 °C / 2,16 kg)	920	n.a.	n.a.	n.a.
LDPE	R	RSH LDPE 2150 i black	98/0		10 - 15 (190 °C / 2,16 kg)	930	n.a.	n.a.	n.a.
PP	R	RSH PP 1080 i dark grey	98/0		5,0 – 8,0 (230 °C / 2,16 kg)	930	n.a.	n.a.	n.a.
PP	R	RSH PP 1100 i transparent	100/0	black	5,0 – 10 (230 °C / 2,16 kg)	905	n.a.	n.a.	n.a.
PP	R	RSH PP 1100 i + transparent	100/0		5,0 – 10 (230 °C / 2,16 kg)	905	n.a.	n.a.	n.a.
PP	R	RSH PP 1120 i jet black PCR	0/100		6,0 – 12 (230 °C / 2,16 kg)	940	4,5	1.200	n.a.
PP	R	RSH PP 1170 i transparent	100/0	transparent, black	12 – 17 (230 °C / 2,16 kg)	905	n.a.	n.a.	n.a.
PP	R	RSH PP 1170 i + transparent	100/0		12 – 17 (230 °C / 2,16 kg)	905	n.a.	n.a.	n.a.
PP	R	RSH PP 1300 i transparent	100/0	whitish	20 – 30 (230 °C / 2,16 kg)	910	n.a.	n.a.	n.a.
PP	R	RSH PP 1300 i + transparent	100/0		20 – 30 (230 °C / 2,16 kg)	910	n.a.	n.a.	n.a.
PP	R	RSH PP 1300.6 i black	98/0	mixed color	20 – 30 (230 °C / 2,16 kg)	950	n.a.	n.a.	≤ 10
PP	R	RSH PP 1500 i transparent	100/0	whitish, black	30 – 50 (230 °C / 2,16 kg)	910	n.a.	n.a.	n.a.
PP	R	RSH PP 1500.6 i mixed color	100/0	black	30 – 50 (230 °C / 2,16 kg)	950	n.a.	n.a.	≤ 10
PPH	R	RSH PPH 1060 i black	98/0	mixed color	3,5 – 6,0 (230 °C / 2,16 kg)	950	n.a.	n.a.	< 5
PPH	R	RSH PPH 1100 i black PCR	0/98		5,0 – 10 (230 °C / 2,16 kg)	950	n.a.	1.650	n.a.
PPH	R	RSH PPH 1350 i + transparent	100/0		25 – 35 (230 °C / 2,16 kg)	910	n.a.	1.400	n.a.

*rC = rCompounds, R = Regranulates

Ask about other standard or tailor-made recyclates for your industry or processing method

**Automotive
Construction
Packaging
Consumer goods**





Recyclates from selected material streams

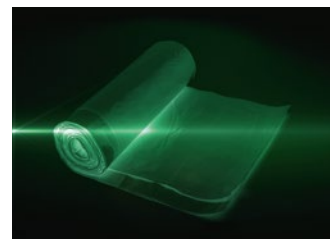
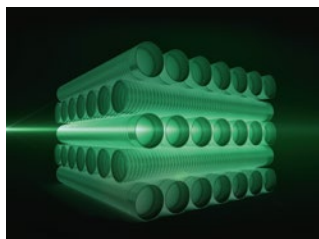
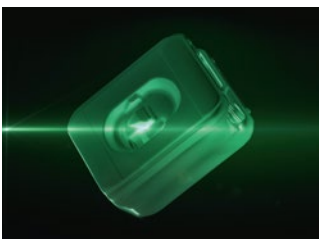
You have the choice

From post-industrial and post-consumer waste

- + Plain surfaces
- + Barely perceptible odor
- + Narrow tolerances
- + Constant property levels
- + Use of clean raw materials
- + Good processability

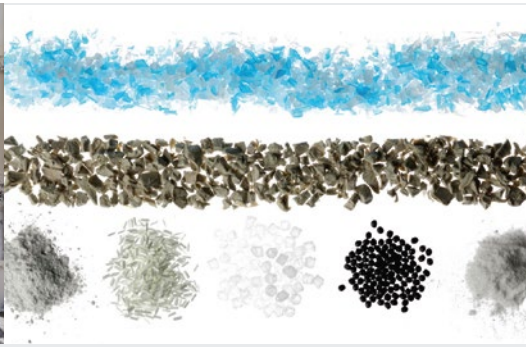


Blow
molding
Extrusion
Injection
Film



We stand for a true circular economy

Recyclates – „Made in Germany“



Production

- Batch homogenization up to 25 tons
- Storage in insulated warehouses
- Production on single- and double screw extruders
- Experienced employees with a lot of know-how
- Incorporation of additives, stabilizers and fillers

Development

- Tailor-made according to customer requirements
- In-house technical center with laboratory extruders
- Planning, testing and implementation of projects

Testing options laboratories

- Physical properties
- Mechanical properties
- Thermal properties
- Raw material analysis

You are on the safe side with us



Co₂ Balancing

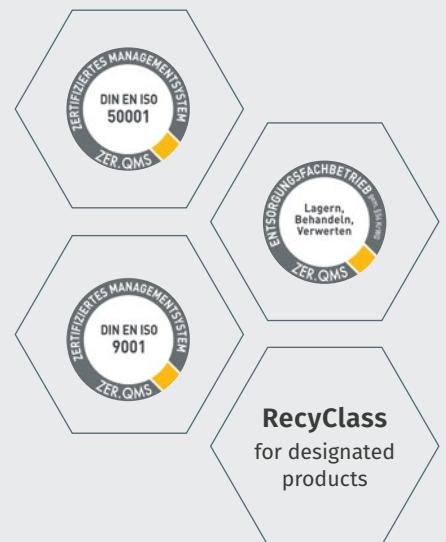
CO₂ Certificates per grade on request

Determination of the GWP (Global Warming Potential) for 1 kg of the recyclate



We have been a driving force in the circular economy since 1958

At RSH we focus on energyefficient production and the protection of the environment



www.rshpolymere.de